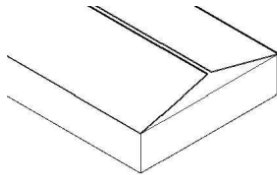


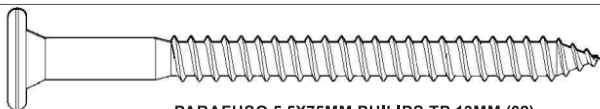
(17) 3485- 9300



NECESSÁRIO PARA MONTAGEM  
(NÃO FORNECIDO)

NECESARIO PARA EL MONTAJE  
(NO PROVISTO)

NECESSARY FOR ASSEMBLY  
(NOT PROVIDED)



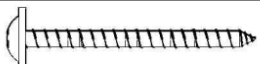
PARAFUSO 5,5X75MM PHILIPS TP 13MM (02)  
TORNILLO 5,5X75 MM PHILIPS TP 13MM (02)  
SCREW 5,5X75 MM PHILIPS TP 13MM (02)

AX



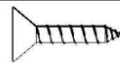
PARAFUSO 4,0x50MM CHATA (17)  
TORNILLO CON CAB. PLANA 4,0x50MM (17)  
FLAT SCREW 4,0x50MM (17)

CC



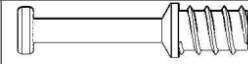
PARAFUSO 4,0 X 30MM FLANGEADO (07)  
TORNILLO 4,0 X 30MM BRIDA (07)  
SCREW 4,0 X 30MM FLANGED (07)

DJ



PARAFUSO 3,5x14MM CHATA (28)  
TORNILLO CON CAB. PLANA 3,5x14MM (28)  
FLAT SCREW 3,5x14MM (28)

DP



PINO MINIFIX (04)  
PIN MINIFIJO (04)  
MINIFIX PIN (04)

M



CAVILHA 6 X 30MM (30)  
CLAVIJA 6 X 30MM (30)  
DOWEL 6 X 30MM (30)

S



TAMBOR MINIFIX 12x10 (04)  
BIDÓN MINIFIX 12x10 (04)  
MINIFIX DRUM 12x10 (04)

N



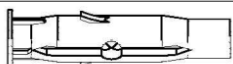
SUPOORTE PRATELEIRA (04)  
SOPORTE PRATELERA (04)  
SHELF SUPPORT (04)

CF



PREGO 10 X 10 (40)  
CLAVO 10 X 10 (40)  
NAIL 10 X 10 (40)

DQ



BUCHA REFORÇADA Nº 8 PARA BLOCO (02)  
CASQUILLO REFORZADO Nº 8 PARA BLOQUE (02)  
REINFORCED BUSHING NO. 8 FOR BLOCK (02)

BA



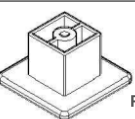
PUXADOR DOBLE 192MM (02)  
MANIJA DOBLE 192MM (02)  
HANDLE DOBLE 192MM (02)

CI



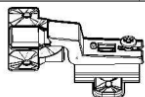
CANTONEIRA 18x18x14 (02)  
CANTONEIRA 18x18x14 (02)  
CORNER PLATE 18x18x14 (02)

D



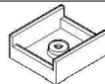
PUXADOR STUB (03)  
MANIJA STUB (03)  
HANDLE STUB (03)

DL



DOBRADIÇA 35MM C/ PISTÃO RETA (04)  
BISAGRA 35MM CON PISTON RECTO (04)  
35MM HINGE WITH STRAIGHT PISTON (04)

DR



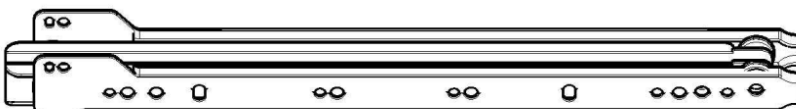
SAPATA U 15MM (04)  
ZAPATA U 15MM (04)  
U 15MM SHOE (04)

DN



TAMPA PARA PARAFUSO 13MM SEM PINO (02)  
TAPA PARA TORNILLO 13MM SIN PASADOR (02)  
CAP FOR SCREW 13MM WITHOUT PIN (02)

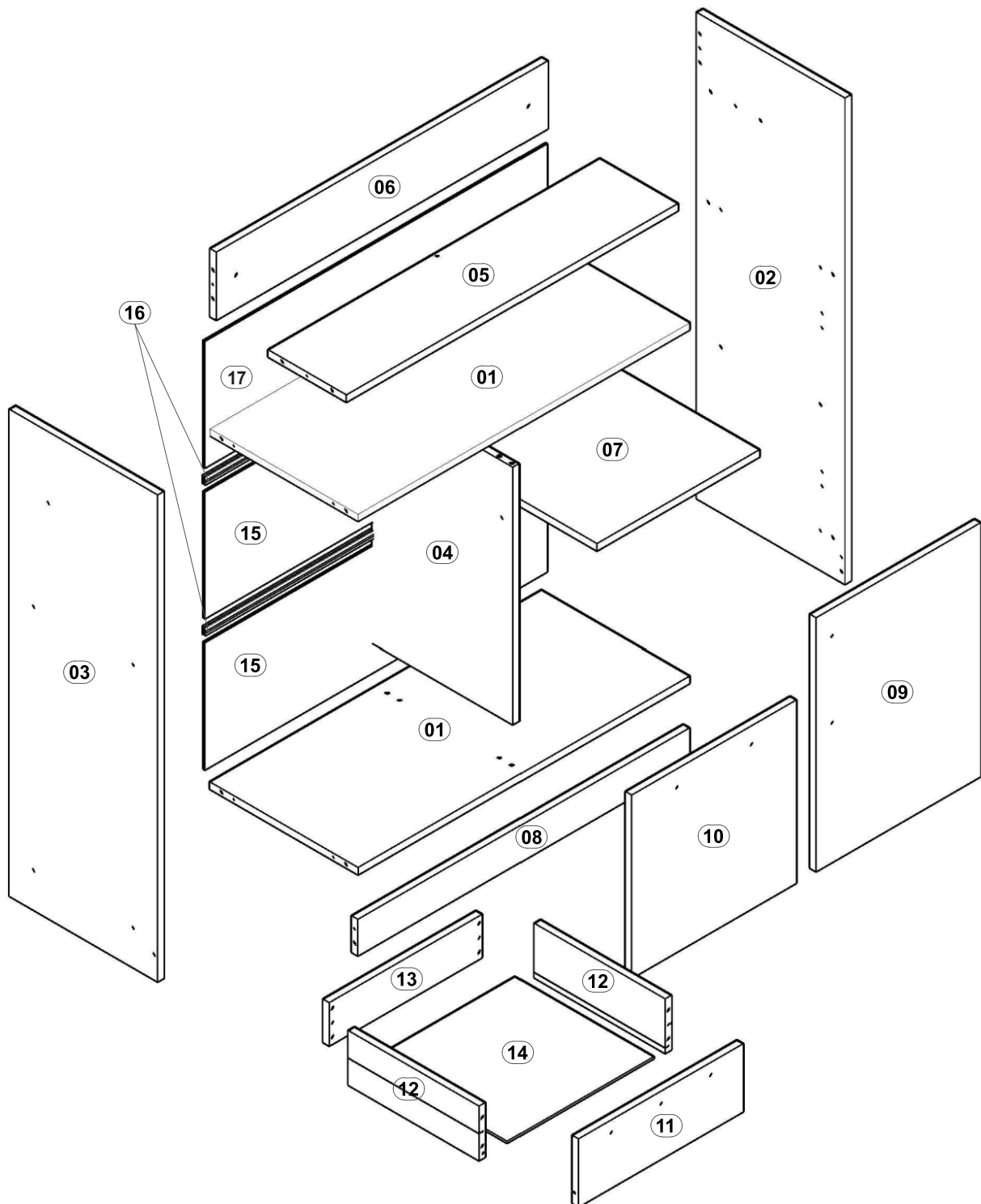
DD



CORREIÇA METÁLICA 350MM (01)  
DIAPOSITIVA METÁLICA 350MM (01)  
METAL SLIDE 350MM (01)

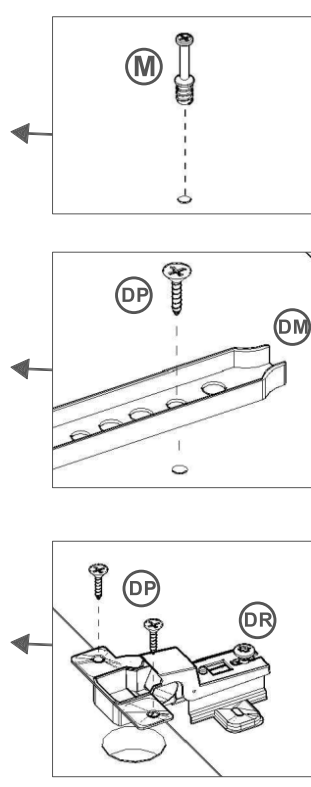
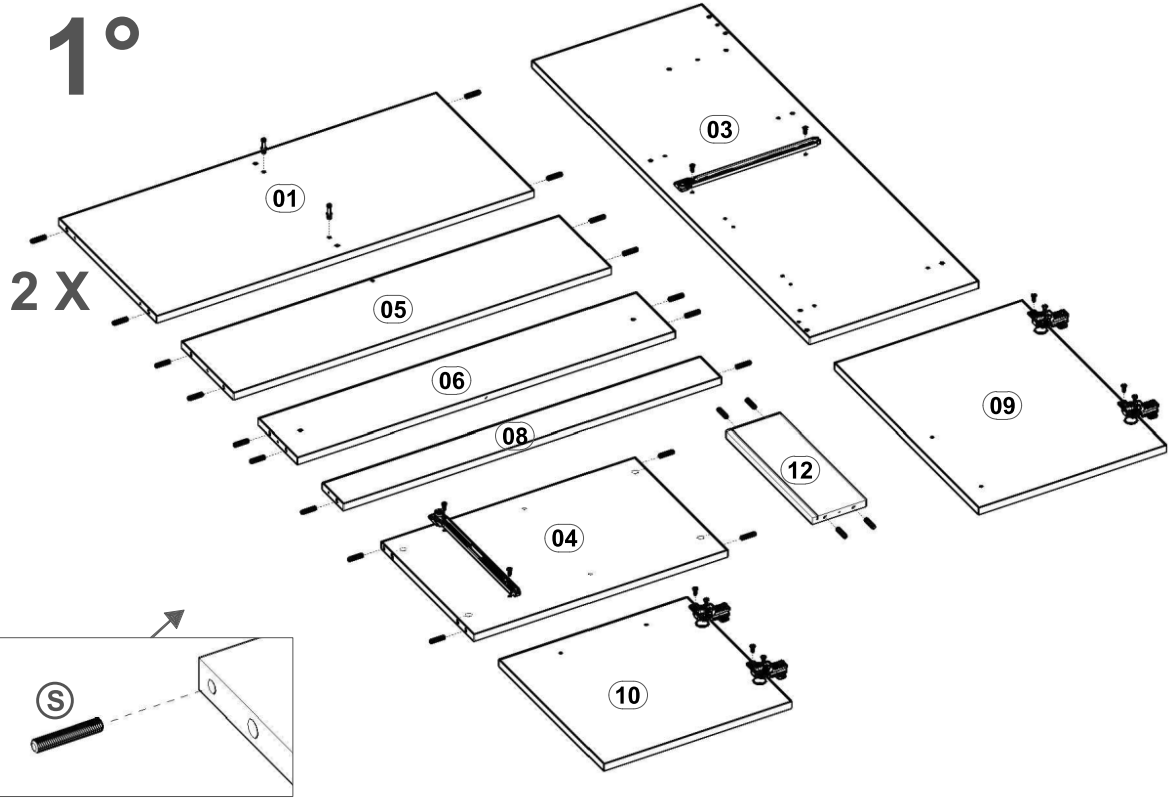
DM

| REF. | COD.   | DESCRIÇÃO DA PEÇAS     | DESCRIPCIÓN DE LAS PIEZAS | PARTS DESCRIPTION         | DIMENSÕES/DIMENSIONES/DIMENSIONS |   |       |   | VOL.  | QTD./CANT. |   |
|------|--------|------------------------|---------------------------|---------------------------|----------------------------------|---|-------|---|-------|------------|---|
|      |        | PORTUGUÊS              | ESPAÑHOL                  | INGLÊS                    |                                  |   |       |   |       | QTY.       |   |
| 01   | MA 230 | TAMPO                  | TOP                       | TOP                       | 0,850                            | x | 0,380 | x | 0,015 | 1/1        | 1 |
| 02   | MA 231 | LATERAL DIREITA        | LADO DERECHO              | RIGHT SIDE                | 1,080                            | x | 0,380 | x | 0,015 | 1/1        | 1 |
| 03   | MA 232 | LATERAL ESQUERDA       | LADO IZQUIERDO            | LEFT SIDE                 | 1,080                            | x | 0,380 | x | 0,015 | 1/1        | 1 |
| 04   | MA 233 | DIVISÓRIA              | DIVISIÓN                  | DIVISION                  | 0,570                            | x | 0,360 | x | 0,015 | 1/1        | 1 |
| 05   | MA 234 | PRATELEIRA             | PRATELERA                 | SHELF                     | 0,850                            | x | 0,200 | x | 0,015 | 1/1        | 1 |
| 06   | MA 235 | TRAVA SUPERIOR         | BLOQUEO SUPERIOR          | TOP LOCK                  | 0,850                            | x | 0,150 | x | 0,015 | 1/1        | 1 |
| 07   | MA 236 | PRATELEIRA AJUSTÁVEL   | PRATELERA AJUSTABLE       | ADJUSTABLE SHELF          | 0,417                            | x | 0,360 | x | 0,015 | 1/1        | 1 |
| 08   | MA 237 | RODAPÉ                 | RODAPIÉ                   | BASEBOARD                 | 0,850                            | x | 0,080 | x | 0,015 | 1/1        | 1 |
| 09   | MA 238 | PORTA DIREITA          | PUERTA DERECHA            | RIGHT DOOR                | 0,562                            | x | 0,422 | x | 0,015 | 1/1        | 1 |
| 10   | MA 239 | PORTA ESQUERDA         | PUERTA IZQUIERDA          | LEFT DOOR                 | 0,422                            | x | 0,406 | x | 0,015 | 1/1        | 1 |
| 11   | MA 240 | FRENTE DE GAVETA       | FRENTE DE CAJÓN           | DRAWER FRONT              | 0,422                            | x | 0,150 | x | 0,015 | 1/1        | 1 |
| 12   | MA 241 | LATERAL DE GAVETA      | LADO DEL CAJÓN            | DRAWER SIDE               | 0,335                            | x | 0,120 | x | 0,015 | 1/1        | 2 |
| 13   | MA 242 | CONTRA FUNDO DE GAVETA | CONTRA EL FONDO DEL CAJÓN | AGAINST DRAWER BACKGROUND | 0,392                            | x | 0,095 | x | 0,015 | 1/1        | 1 |
| 14   | MA 243 | FUNDO DE GAVETA        | FONDO DE CAJÓN            | DRAWER BOTTOM             | 0,377                            | x | 0,357 | x | 0,003 | 1/1        | 1 |
| 15   | MA 244 | FUNDO COZINHA          | FONDO DE COCINA           | KITCHEN BACKGROUND        | 0,877                            | x | 0,280 | x | 0,003 | 1/1        | 2 |
| 16   | MA 246 | PERFIL H               | PERFIL H                  | PROFILE H                 | 0,880                            | x | 0,016 | x | 0,006 | 1/1        | 2 |
| 17   | MA 264 | FUNDO C/ ADESIVO       | FONDO                     | BACKGROUND                | 0,877                            | x | 0,280 | x | 0,003 | 1/1        | 1 |
| 18   | MA 263 | BASE                   | BASE                      | BASE                      | 0,850                            | x | 0,380 | x | 0,015 | 1/1        | 1 |

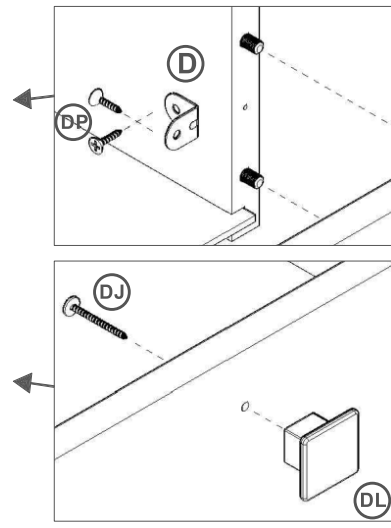
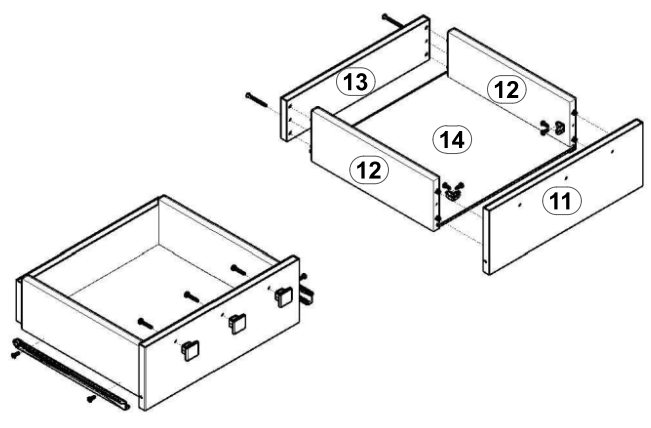
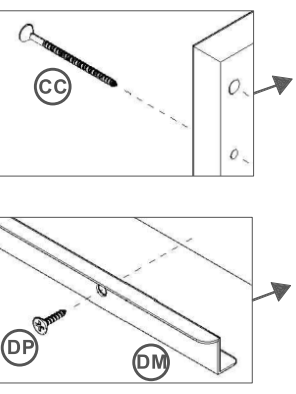


# 1°

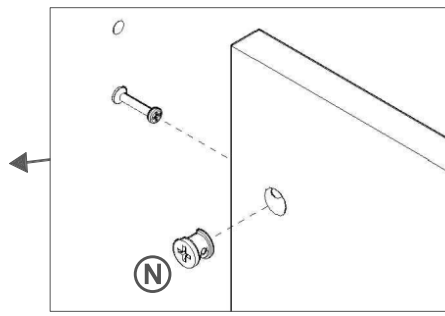
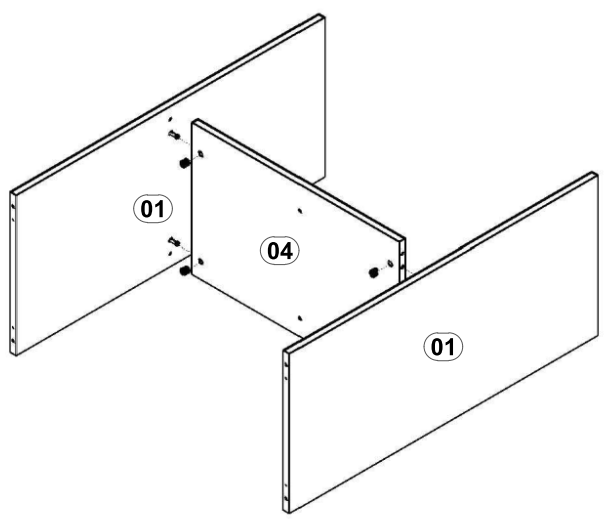
2 X



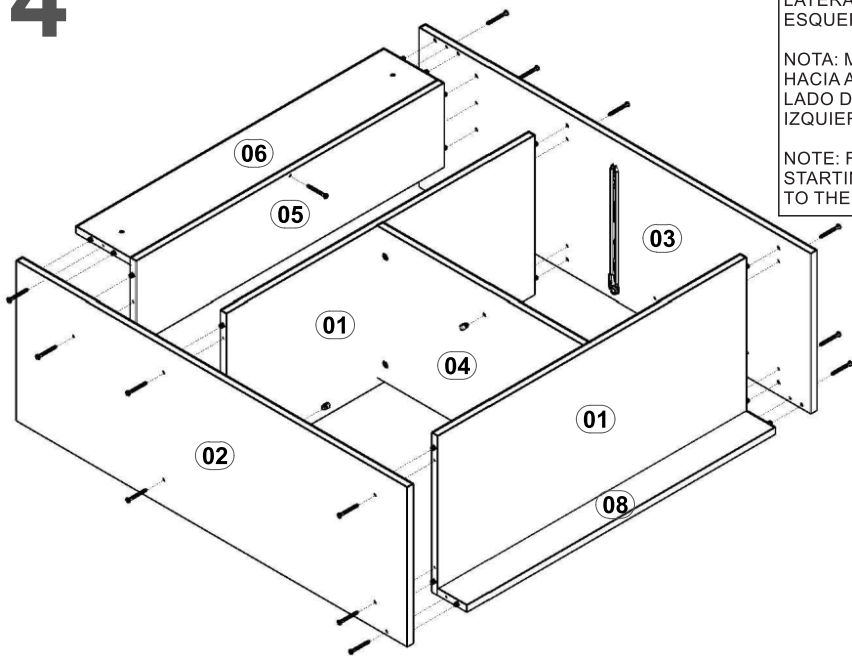
# 2°



# 3°



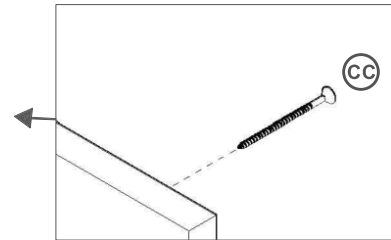
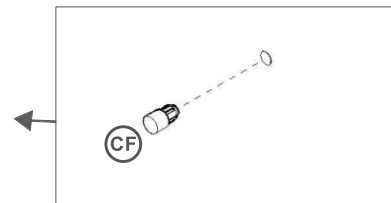
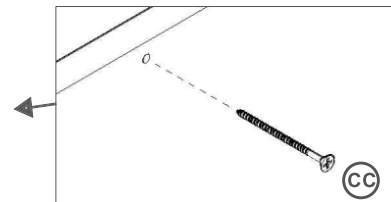
# 4°



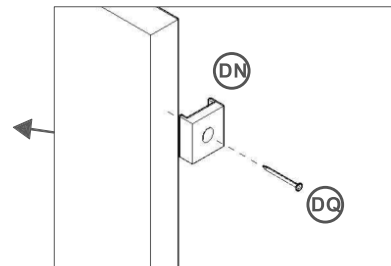
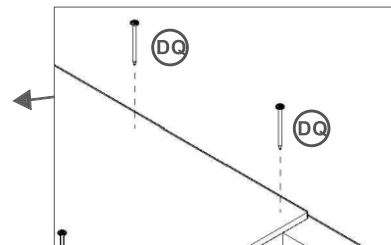
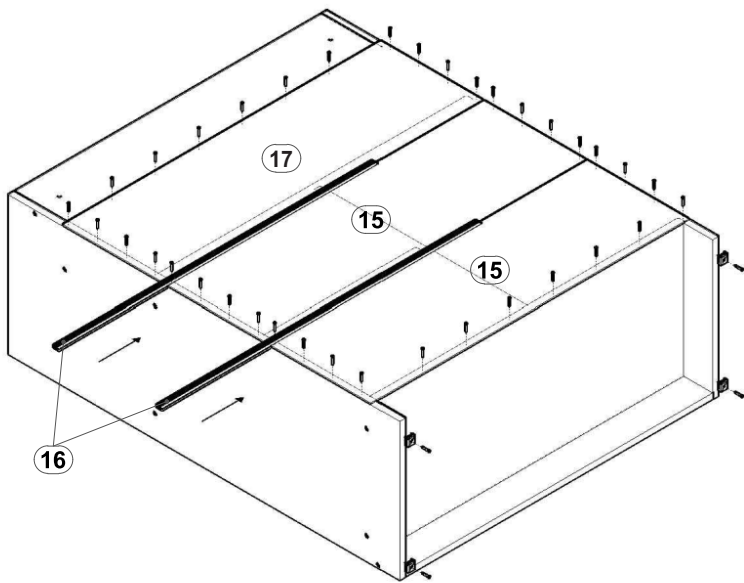
OBS: MONTAGEM COM A FRENTE PARA BAIXO, INICIANDO DA LATERAL DIREITA PARA A ESQUERDA.

NOTA: MONTAJE DELANTERO HACIA ABAJO, COMENZANDO DEL LADO DERECHO HACIA EL IZQUIERDO.

NOTE: FRONT DOWN ASSEMBLY, STARTING FROM THE RIGHT SIDE TO THE LEFT.



# 5°



# 6°

