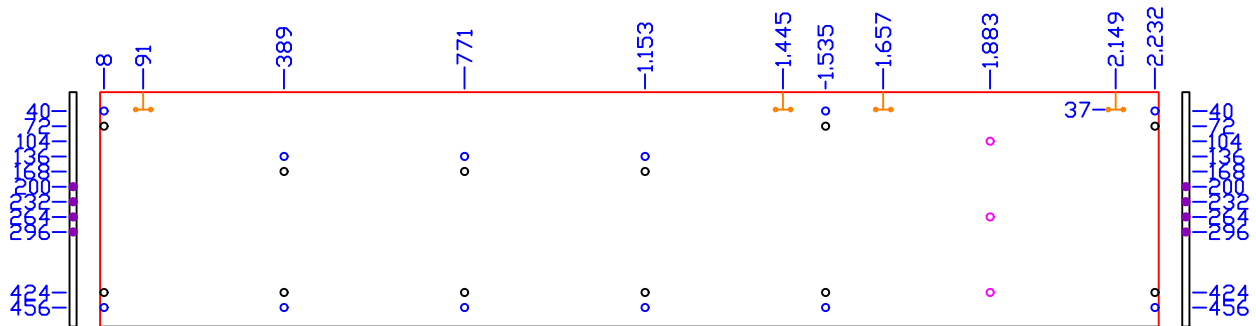
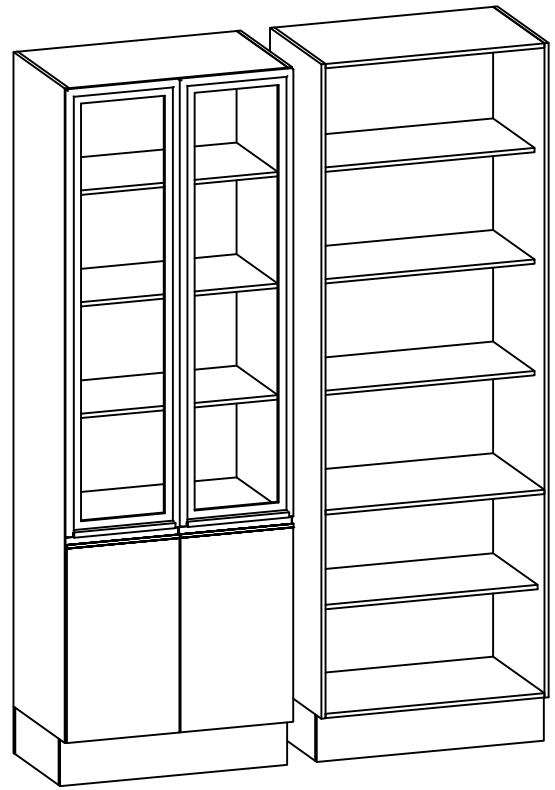
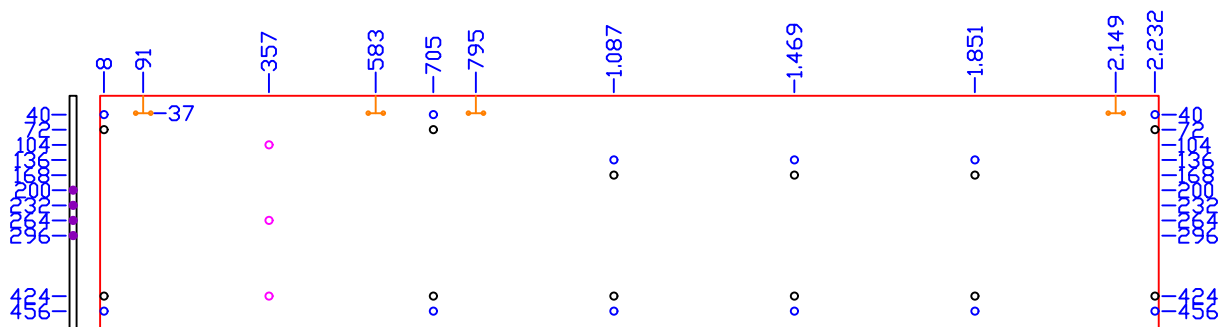


- ϕ 5 Passante (lado)
- ϕ 6x12 Cavilha (lado)
- ϕ Marcação (lado)
- ϕ 8x4 Cavilha (topo)
- ϕ 5,5x12 Suporte (lado)

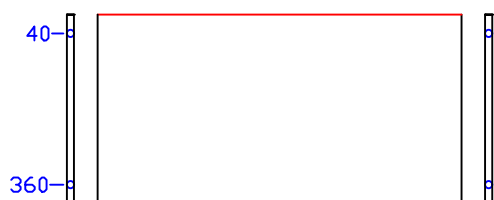
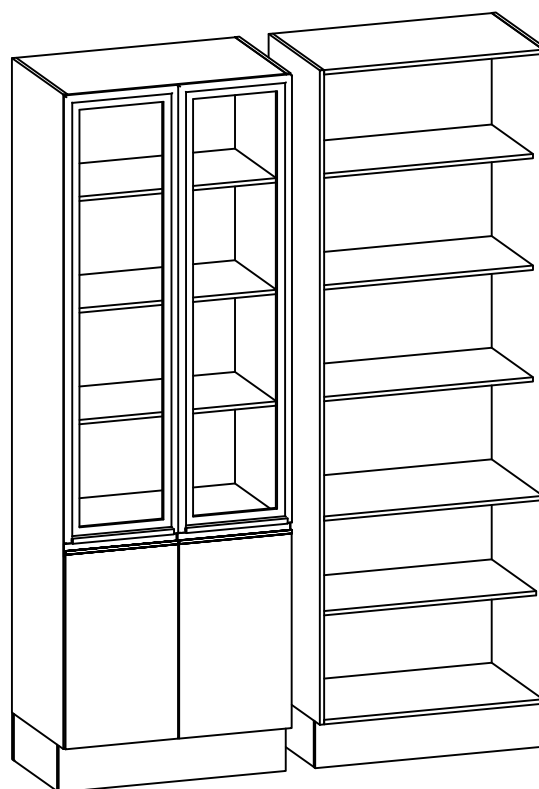


LATERAL ESQUERDA
2240x496



LATERAL DIREITA
2240x496

- ϕ 5 Passante (lado)
- ϕ 6x23 Cavilha (topo)
- ϕ 6x12 Cavilha (lado)
- ϕ 5,5x12 Suporte (lado)



PRATELEIRA SUP. FIXA

770x400

3 PEÇAS



RODAPÉS FRONTAL E

TRASEIRO

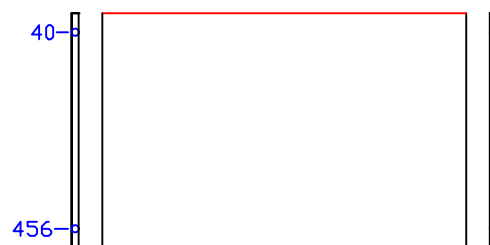
799x160



RODAPÉS LATERAIS

420x160

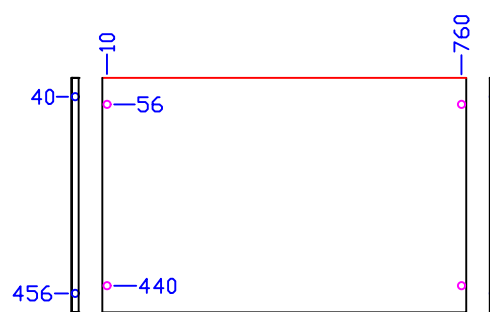
2 PEÇAS



CHAPÉU E TAMPO

770x496

2 PEÇAS

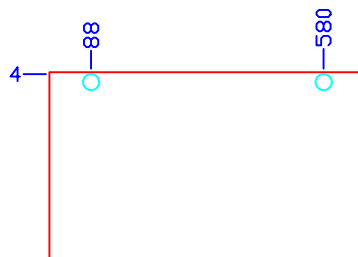
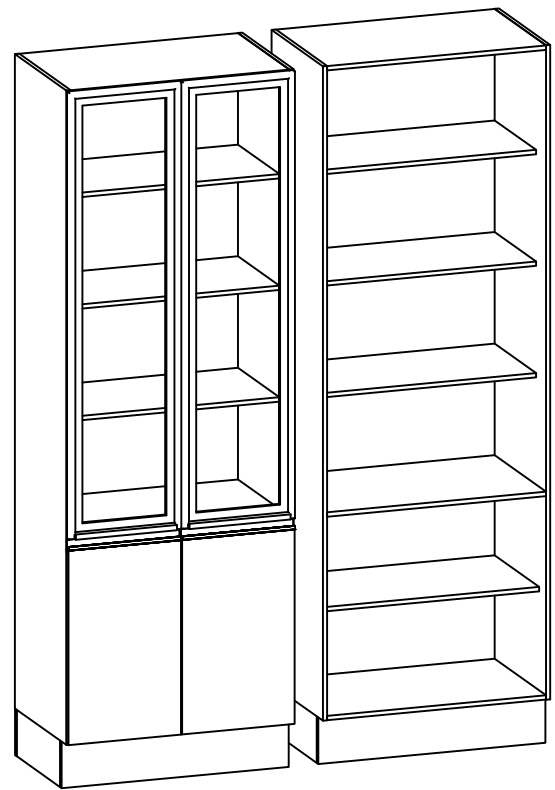


BASE

770x496

FURAR DE CIMA P/BAIXO

● Ø 35x12 Dobradiça (lado)



PORTA INFERIOR
668x396
2 PEÇAS