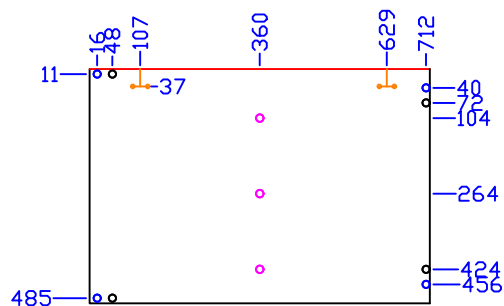
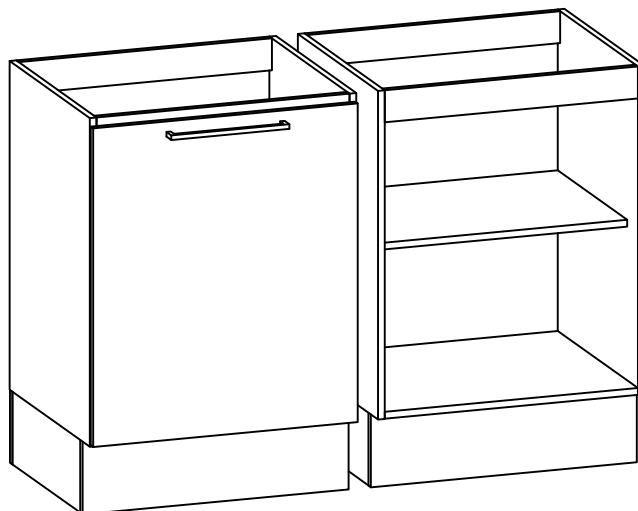
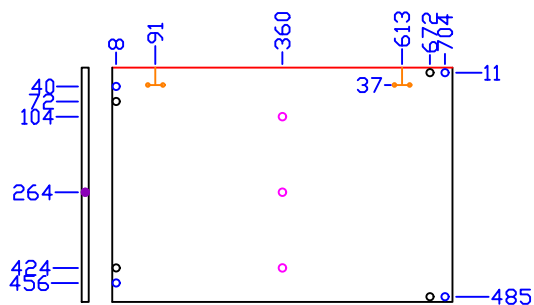


- $\phi$  5 Passante (lado)
- $\phi$  6x12 Cavilha (lado)
- $\phi$  Marcação (lado)
- $\phi$  5,5x12 suporte (lado)
- $\phi$  8x5 Cavilha (topo)

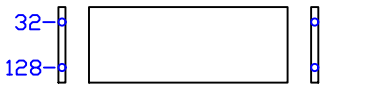
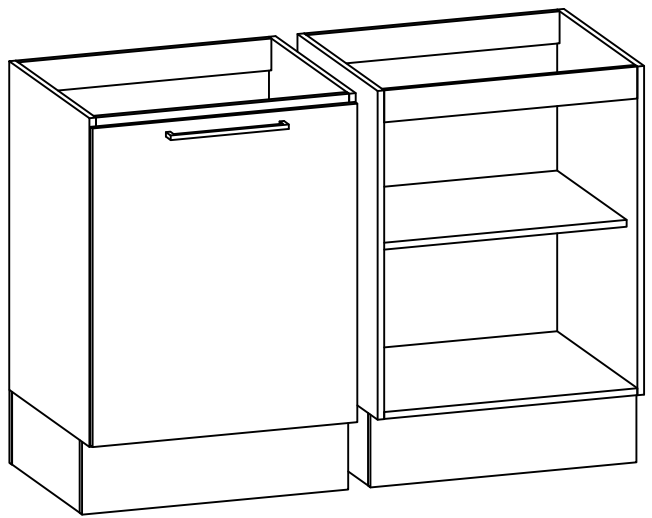


LATERAL ESQUERDA  
720x496

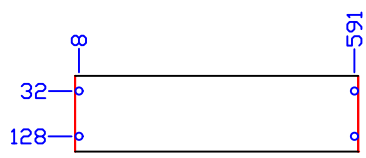


LATERAL DIREITA  
720x496

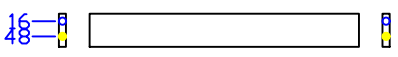
- $\phi$  2,5x23 Estrutural (topo)
- $\phi$  6x23 Cavilha (topo)
- $\phi$  6x12 Cavilha (lado)
- $\phi$  5,5x12 suporte (lado)



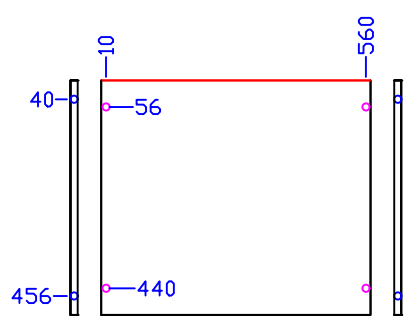
RODAPÉ LATERAL  
420x160  
**2 PEÇAS**



RODAPÉ FRONTAL E  
TRASEIRO  
599x160



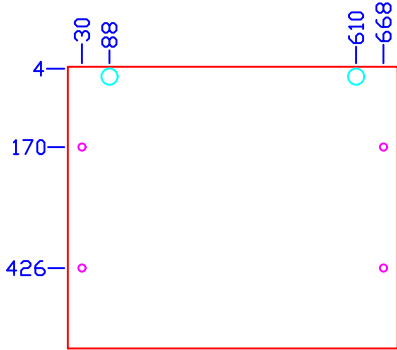
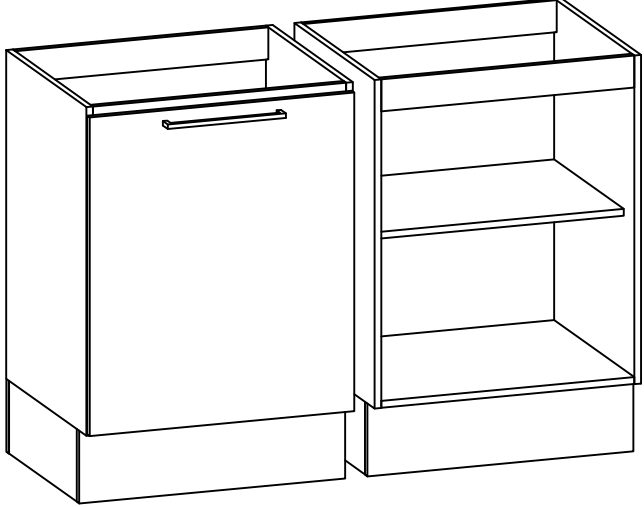
TRAVESSAS  
570x70  
**2 PEÇAS**



BASE  
570x496

●  $\phi$  5,5x12 suporte (lado)

●  $\phi$  35x12 Dobradiça (lado)



PORTA  
698x596