

CO14101 - AÉREO CANTO RETO

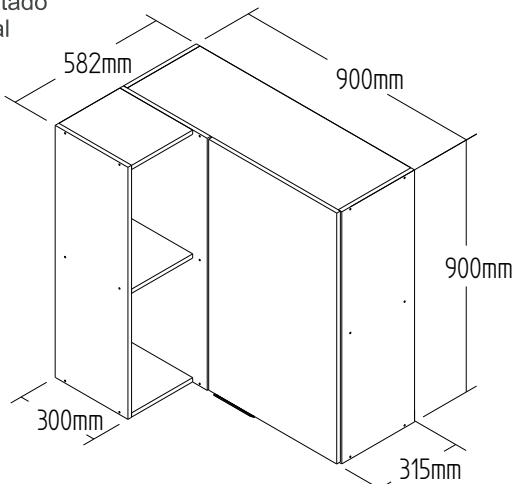
Manual de Montagem
 Assembly Instructions
 Instrucción de Montaje

decibal[®]
 móveis

Produto Montado
 Producto final
 Assembled



Direita
 Right
 Derecha



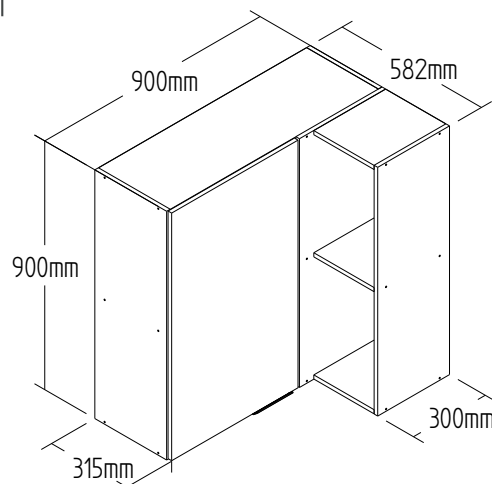
Verificar o lado desejado antes de efetuar a montagem
 Check the desired side before mounting
 Compruebe el lado deseado antes de montar

Possui montagem dois lados/tiene un montaje de dos lados/ It has two sides

Produto Montado
 Producto final
 Assembled

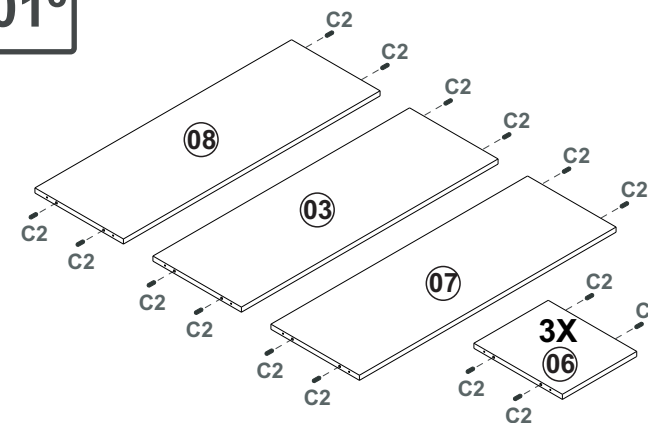


Esquerdo
 left
 Izquierda

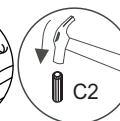


Possui montagem dois lados/tiene un montaje de dos lados/ It has two sides

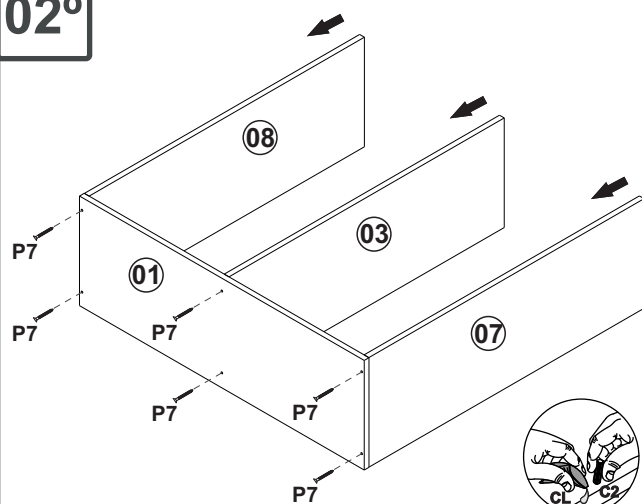
01°



C2
 36UNI

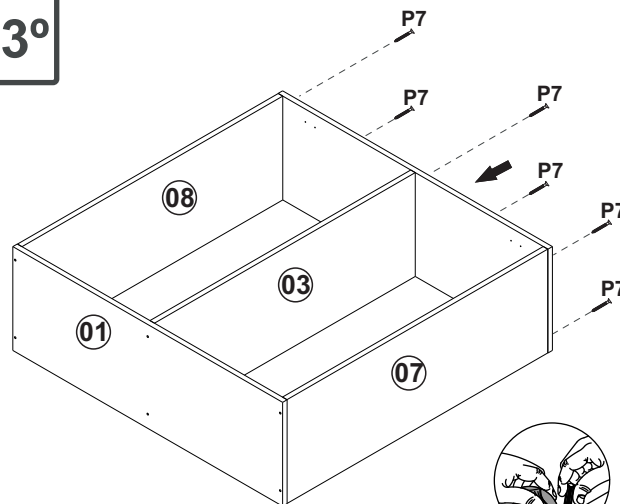


02°



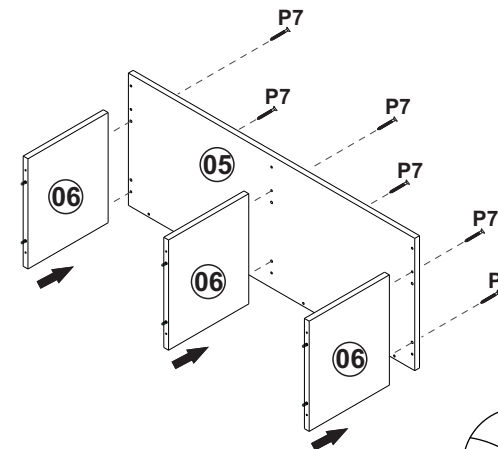
P7
 6 UNI

03°



P7
 6 UNI

04°



P7
 6 UNI

CO14101 - AÉREO CANTO RETO

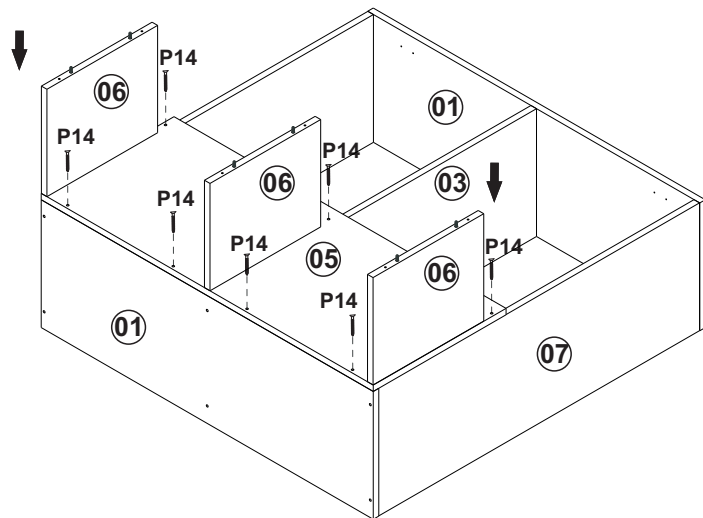
Manual de Montagem
Assembly Instructions
Instrucción de Montaje

decibal[®]
móveis

05°



Direita
Right
Derecha

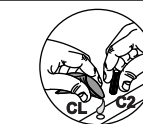
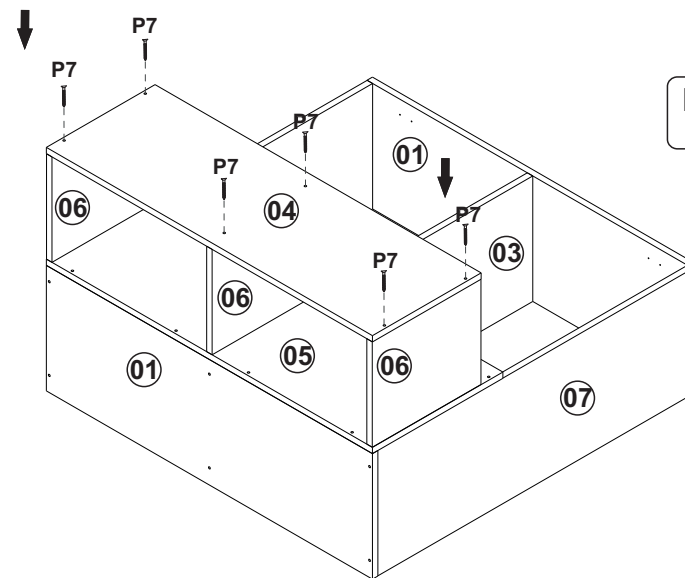


P14
7 UNI

06°



Direita
Right
Derecha

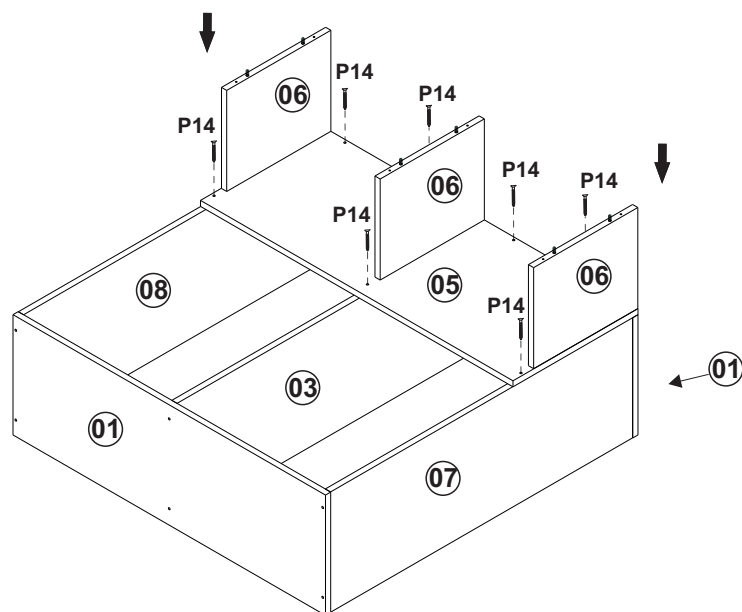


P7
6 UNI

07°



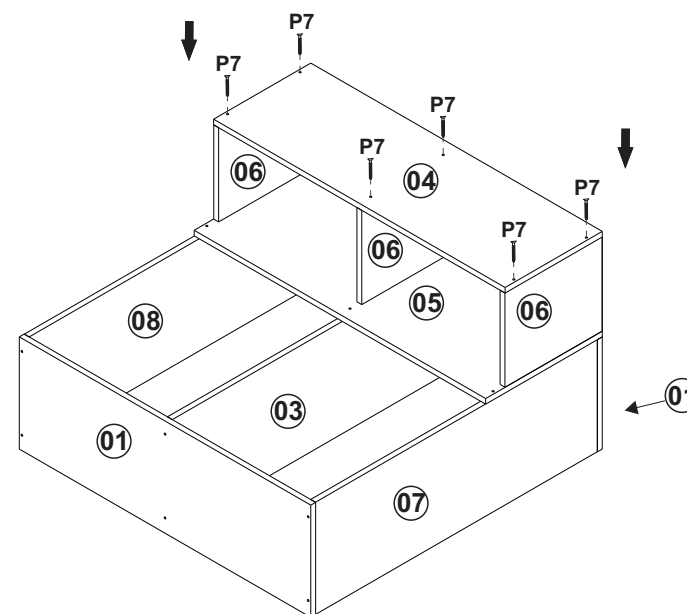
Esquerdo
left
Izquierda



08°



Esquerdo
left
Izquierda



CO14101 - AÉREO CANTO RETO

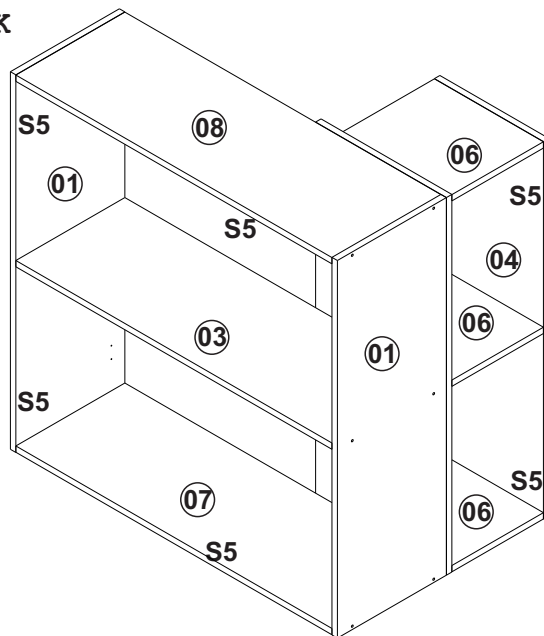
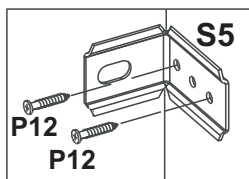
Manual de Montagem
Assembly Instructions
Instrucción de Montaje

decibal[®]
móveis

09° COSTA/REVÉS/BACK



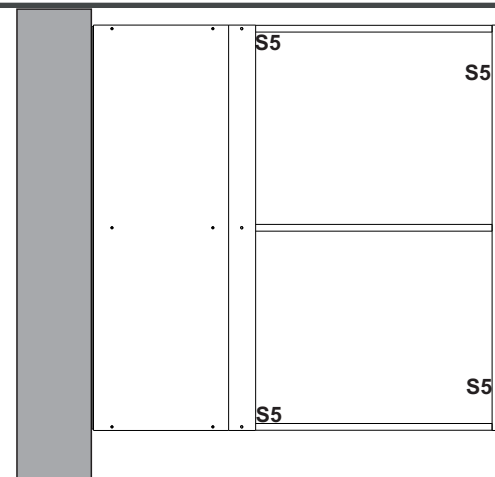
Direita
Right
Derecha



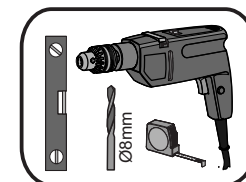
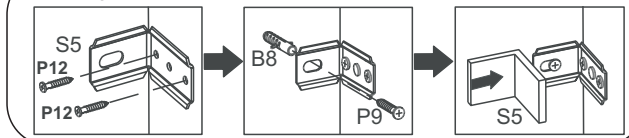
11°



Direita
Right
Derecha



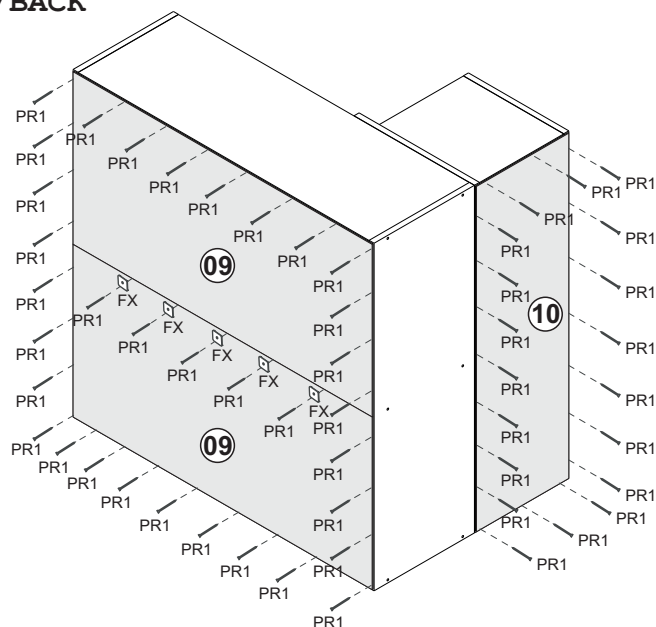
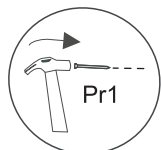
FIXAÇÃO NA PAREDE/ FIJACIÓN EN LA PARED/ FIXING ON THE WALL



10° COSTA/REVÉS/BACK



Direita
Right
Derecha

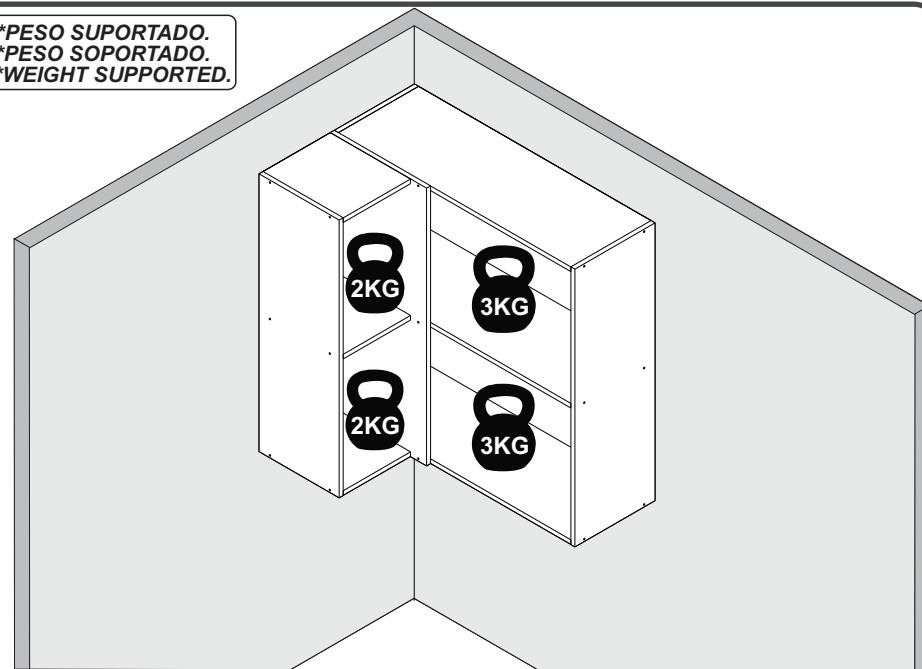


08°



Direita
Right
Derecha

*PESO SUPORTADO.
*PESO SOPORTADO.
*WEIGHT SUPPORTED.



CO14101 - AÉREO CANTO RETO

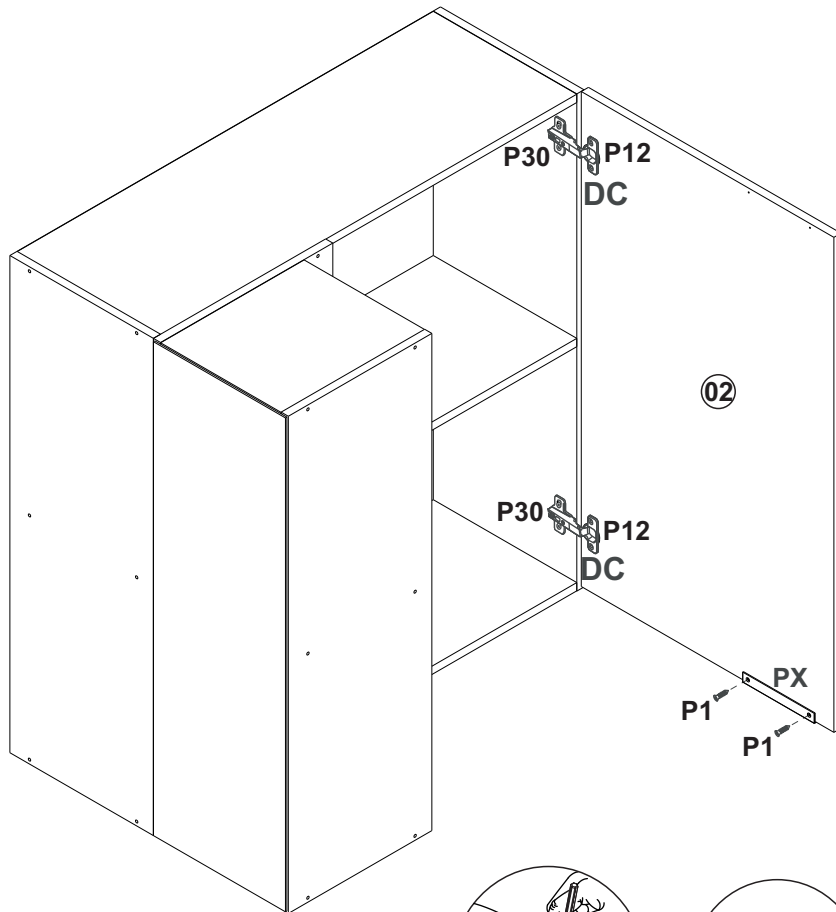
Manual de Montagem
Assembly Instructions
Instrucción de Montaje

decibal[®]
móveis

12°

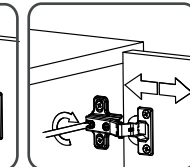
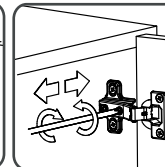
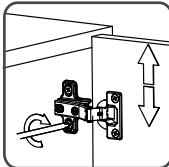
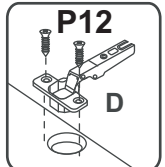
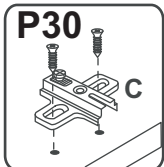
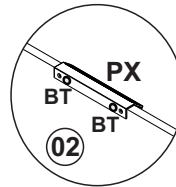
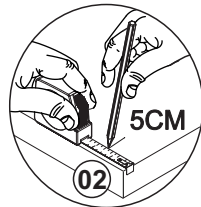


Direita
Right
Derecha



ATENÇÃO!!!!

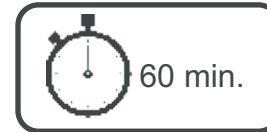
MARCAÇÃO PRA O PRIMEIRO FURO DO PUXADOR
MARCADO PARA EL PRIMER AGUJERO
MARKING FOR THE FIRST HANDLE HOLE



Relação de Peças/ Relación de Piezas/Parts List

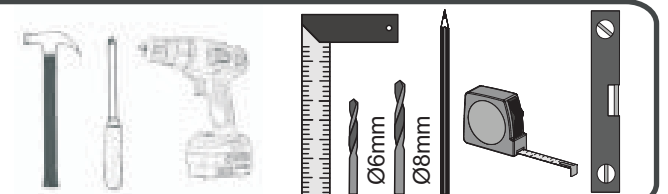
N°	CÓDIGO/CODE	DESCRIÇÃO/DESCRIPCIÓN/DESCRIPTION	QTD/CANT	VOL.	
1	0560906	LATERAL/LATERAL/SIDE	900X300X15MM	2	1
2	0560912	PORTA/PUERTA/DOOR	896X528X15MM	1	1
3	0560908	PRATELEIRA MAIOR/ESTANTE/SHELF	870X300X15MM	1	1
4	0560910	LATERAL AFAST DIR/LATERAL/SIDE	900X300X15MM	1	1
5	0560909	LATERAL AFAST ESQ/LATERAL/SIDE	900X360X15MM	1	1
6	0560911	BASE	252X300X15MM	3	1
7	0560905	BASE INF	870X300X15MM	1	1
8	0560907	BASE SUP	870X300X15MM	1	1
9	0560913	COSTA MAIOR/REVÉS/BACK	894X447X2, 8MM	2	1
10	0560914	COSTA MENOR/REVÉS/BACK	894X276X2, 8MM	1	1

www.decibal.com.br



ATENÇÃO!!!! montadores e consumidores
* Ajustar o torque da parafusadeira para não danificar as peças escareando o parafuso *
ATENCIÓN!!!! montadores e consumidores
* Ajuste el torque del destornillador para no dañar las piezas avallanando el tornillo *
ATTENTION!!!! assemblers and consumers
* Adjust the torque of the screwdriver so as not to damage the parts by countersinking the screw *

Ferramentas necessárias
Necessary tools
Herramientas necesarias



ATENÇÃO!!!! montadores e consumidores
* Para limpar o móveis utilize somente um pano úmido (umedecido em água pura ou água com sabão neutro). Depois, passe um pano seco. Evite a umidade excessiva.
* Evite usar álcool, água sanitária, detergente e outros produtos químicos, mesmo diluídos em água. Não utilize produtos abrasivos de nenhuma espécie

ATENCIÓN!!!! montadores e consumidores
* Para limpiar el mueble utilice solamente un paño húmedo (humedecido con agua limpia o con un jabón suave). Acontinuación, utilice un paño seco. Evite el exceso de humedad.
* Evite uso de alcohol, hipoclorídrico solución basada, detergente y otros productos químicos, mismo diluidos en agua. No utilice productos abrasivos de ningún tipo.










ATTENTION!!!! assemblers and consumers
* To clean the furniture, use only a damp cloth (humidify it only in pure water or water and neutral soap). After, use a dry cloth. Avoid excessive humidity.
* Avoid using alcohol, bleach, detergent and other chemical products, even diluted in water. Do not use any kind of abrasive cleaning agents to clean the furniture.
The use of such products may jeopardize the final characteristics of the furniture.

CO14101 - AÉREO CANTO RETO







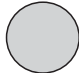

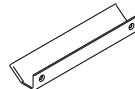
Manual de Montagem
Assembly Instructions
Instrucción de Montaje



Ferragens/ Herrajes/ Hardware

		escala (1:1)	
LEGENDA	DESCRIÇÃO/DESCRIPCIÓN/DESCRIPTION	CÓDIGO	QUANT.
P7	 PARAFUSO/TORNILLO/SCREW 4X45	01318	24
PR1	 PREGO/CLAVO/NAIL 10X10	01330	80
C2	 CAVILHA/TARUGO/DOWEL 6X30 MM	01211	26
P1	 PARAFUSO/TORNILLO/SCREW 3,5X12	01328	02
PU	 PARAFUSO UNIÃO/UNIÓN DETORNILLO /SCREW UNION	01495	02
P12	 PARAFUSO/TORNILLO/SCREW 3,5X13	09927	20
P9	 PARAFUSO/TORNILLO/SCREW 6X50	03827	06
P14	 PARAFUSO/TORNILLO/SCREW 3,5X35	11871	07
P30	 PARAFUSO/TORNILLO/SCREW 4X16	12291	04

escala (N/A)

LEGENDA	DESCRIÇÃO/DESCRIPCIÓN/DESCRIPTION	CÓDIGO	QUANT.
CL	 COLA/PEGAMENTO/GLUE	01213	01
ET	 ETIQUETA LOGO DECIBAL/LABEL DECIBAL	01312	01
B1	 BUCHA/BUJE/BUCHING (8mm)	01311	06
DC	 DOBRADIÇA/BISAGRA/HINGE 35MM / 165°CURVA	04128	02
S5	 SUPORTE AÉREO/APOYO AÉREO/AIR SUPPORT	03828	06
FX	 FIXADOR COSTA/FIJADOR FONDO/FIXER COAST	01331	09
AD	ADESIVO/ADHESIVO/ADHESIVE 	15mm	26
BT	BATENTE/BATIENTE DE SILICONA/SILICONE STOP 8MM 	02921	02
PX	PUXADOR/PEGADOR /HANDLE CHAMPANHE(AKEO 128MM) 	12611	01

Medida em mm

